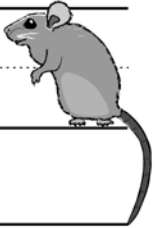




D d

D D D D



Handwriting practice lines for uppercase letter D. The first row contains four dashed 'D's for tracing. Below are three more rows of empty handwriting lines (top solid, middle dashed, bottom solid) for independent practice.

d d d d



Handwriting practice lines for lowercase letter d. The first row contains four dashed 'd's for tracing. Below are three more rows of empty handwriting lines (top solid, middle dashed, bottom solid) for independent practice.